

Chartered Institution of CIVIL ENGINEERING SURVEYORS



Registered office: Dominion House, Sibson Road,
Sale, Cheshire M33 7PP United Kingdom

Chartered Institution of Civil Engineering Surveyors is a registered educational charity.

Contents

Civil Engineering Surveying	4	Mission, Vision and Values	9
Chartered Institution of Civil Engineering Surveyors	5	Governance	10
Geospatial Engineering	6	Organisational Structure	11
Commercial Management	7	Regions	12
Membership	8	SURCO	13



Civil Engineering Surveying



Civil engineering construction makes a vital contribution to the world's economy, employing millions of people across the globe. It is responsible for developing, creating and maintaining the infrastructure of countries of all levels of development and wealth. Without a civil engineering industry there would be no clean water, no transport system, no sewage and waste disposal, no heat, no light and no power. The world's infrastructure and its people would be at the mercy of the elements and the natural forces within our changing environment.

ICES members play a key role in all stages of construction. From concept to design and development, from procurement to management, finalisation and resolution of disputes, from maintenance to monitoring – every step is influenced and enhanced by the involvement of a civil engineering surveyor.

By their skill and competence, civil engineering surveyors reduce the risk of failure at any stage of a construction project and not only make an important contribution to the bottom line of the companies and clients they represent, but help to underpin the sustainability of the industry by minimising and even eradicating the unnecessary wastes of time, resources, and money.

Chartered Institution of Civil Engineering Surveyors

The Chartered Institution of Civil Engineering Surveyors (ICES) is an international qualifying body dedicated to the regulation, education and training of surveyors working within civil engineering. Its members have developed special skills ranging from an understanding of, and expertise in, the complexities of dimensional control to the specialist contractual knowledge necessary for the successful commercial management of civil engineering projects.

ICES members are required, at all times, to work to the highest professional standards and to develop and maintain their skills and knowledge through continuing professional development. By using those skills and expertise, ICES members help reduce the risk of costly wastes of time and resources resulting from errors in setting out or poor cost control, and ensure that the project is completed successfully on time and within budget.



Geospatial Engineering

Geospatial engineering is an important part of civil engineering construction projects. Engineering surveyors are involved in all phases of construction, providing mapping at design stage, controlling building position during construction and checking for movement by monitoring afterwards.

- 🌀 Computer-based measuring to map sites in assistance of design
- 🌀 Producing updated plans at international, national and local scale
- 🌀 Setting out a site so that structures are built to scale and in the right place
- 🌀 Monitoring the construction process
- 🌀 Providing control points so the future movement of structures, such as dams or bridges, can be monitored

Specialisms

- 🌀 Land and engineering surveying (checking setting out and measuring building position to ensure that construction takes place to the dimensions and tolerances required)
- 🌀 Hydrographic surveying (measuring and mapping all parts of the earth's surface that are covered by water)
- 🌀 Photogrammetry and Remote Sensing (collecting data and information from photographs and aerial sensors without touching the objects being surveyed)
 - 🌀 Geographic information systems - GIS (collecting and presenting geographical information)

Commercial Management

Commercial management covers a wide variety of construction commercial processes. Commercial managers are responsible for:

- 🌀 Measuring and valuing the work carried out
- 🌀 The increasingly complex financial arrangements for civil engineering projects
- 🌀 Demonstrating an awareness of the construction process
- 🌀 Planning and programming the work, ensuring that cash flows fit with the financial plan and are fully conversant with accounting practice in declaring the profitability of the project
- 🌀 Ensuring that procurement is carried out within the complex rules that now prevail in public projects and being aware of legal implications
- 🌀 Accurate preparation and administration of contract documents
- 🌀 Developing and close monitoring of works programmes and budgets
- 🌀 Ensuring the settlement of any disputes which might arise

Specialisms

- 🌀 Quantity Surveying
- 🌀 Estimating
- 🌀 Planning
- 🌀 Cost Engineering
- 🌀 Procurement Engineering
- 🌀 Project Management
- 🌀 Construction Law



Membership

Whether you are about to commence your studies, embark on your career, currently have a support or technical role or have many years' experience in civil engineering surveying, commitment to maintaining current industry knowledge and relevant skills is fundamental to your professional development. Each grade of membership is designed to recognise the skills and knowledge of those studying or employed in the civil engineering surveying industry. The membership grades and designations are as follows:

Grade	Designation
Student	No designation
Affiliate	No designation
Graduate	GInstCES
Technical	TInstCES
Associate	AInstCES
Member	MInstCES
Fellow	FInstCES

The institution accredits a range of civil engineering surveying courses, for both commercial management and geospatial engineering specialisms. Whilst studying on an ICES accredited course, you will be eligible to enrol as a Student Member, free of charge, and enjoy a range of membership benefits, services and resources to support your studies.

Applications for membership are welcomed by the institution, not only from those who have the appropriate academic qualifications and/or experience, but also from applicants who have a genuine interest in the construction industry and wish to be affiliated to the institution.

All members are expected to make a commitment to lifelong learning.

Mission - What matters most to us!

The object for which the institution is established is to advance the science and art of civil engineering surveying in all aspects of the specialisations of geospatial engineering and commercial management within civil engineering for the benefit of the public, by upholding and advancing the standards of education, competence, practice and conduct of its members.

Vision – Where are we going?

ICES is recognised as the foremost UK-based professional institution for specialists employed in geospatial engineering and commercial management in the civil engineering industry. ICES strives in all that it does to maintain and improve that position.

Values - How will we act?

Competence and Teamwork

We trust in our own qualifications, capabilities and expertise, and we accept a high degree of responsibility for our work. We build this trust every day by encouraging a culture of innovative ideas, solutions and continuing improvement. We treat everybody fairly and with equal opportunities.

Openness and Trust

We have an open and positive attitude towards change that stays true to our values. Our flexibility, readiness to change, motivation and open and comprehensive communication helps us lead with confidence.

Reliability, Honesty and Integrity

Through honesty, courtesy and reliability we build strong relationships with those with whom we work and represent. We adopt the highest integrity and ethical standards.



Governance

The institution operates with a complement of staff and dedicated volunteers. Members are encouraged to take part in the future development of the institution. This is done through a series of core committees and panels that meet throughout the year. The chief executive and the annually elected president head the task of steering the institution's core committees to develop and implement institution policy. They also work alongside the directors of SURCO, the information business of ICES, to oversee its commercial activities.

The activities of ICES are legally governed in accordance with:

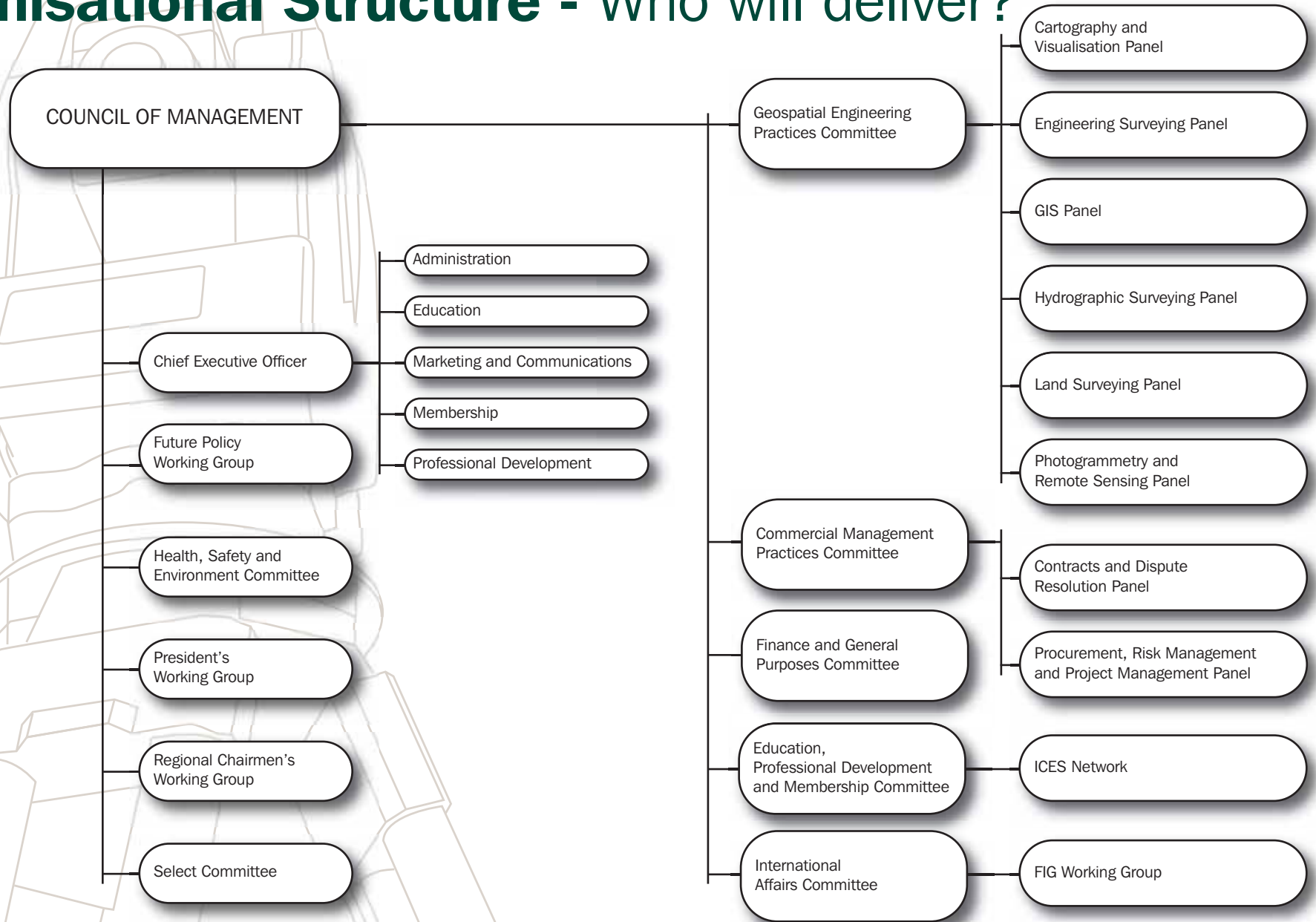
- ☞ Royal charter of incorporation
- ☞ The guidelines of the Charities Commission

by Council of Management (board of trustees) through the following:

- ☞ Delegation of duties to officers and committees
- ☞ Maintenance of a risk register
- ☞ Financial accounts and audit report
- ☞ Annual report to the Charity Commission and members
- ☞ 5 year business plan



Organisational Structure - Who will deliver?



Regions

ICES supports the continuing professional development (CPD) of its members through a network of strategic regions. These regions are located around centres of member populace and are managed by committees that report to Council of Management. The regions are responsible for arranging meetings, events and seminars for the benefit of the members living and working locally.

The regional committees may also be responsible for organising and conducting membership examinations at both technical and full member level, and are charged with liaising with and supporting local university courses in civil engineering surveying and related disciplines, and companies based in their area that run ICES Approved Development Schemes (ADS).

Another important function is for committees to liaise with local government and chambers of commerce to ensure that the profile of the civil engineering surveyor in the community is maintained.

Anglia & Central
Eastern & Midlands
Ireland & Northern Ireland
Hong Kong
Northern Counties
North West & North Wales
Scotland
South East
South West & South Wales
United Arab Emirates
Yorkshire

SURCO

SURCO Ltd was formed in 1992 when the institution became an educational charity. It handles the institution's business and trading interests and its core activities are training, publishing and public events.

SURCO Training provides modular training in many of the surveying competencies essential for employers and individuals engaged in the civil engineering industry. Training can be at all levels of expertise but is particularly focused at those in the early stages of their careers in the UK, Europe and abroad. The modules are approved by the institution for use in support of ICES Approved Development Schemes (ADS).

SURCO Publishing produces the institution's monthly journal, *Civil Engineering Surveyor*, as well as annual supplements on construction law, electronic surveying, GIS and global navigation satellite systems. SURCO also publishes the *ICES Yearbook and Directory of Members*.

In addition to training and publishing activities that are specific to the institution, SURCO identifies and develops other initiatives relevant to construction. All profits generated by SURCO are donated back to ICES for its work as an educational charity.



Contact

Registered office:
Chartered Institution of Civil Engineering Surveyors
Dominion House
Sibson Road
Sale
Cheshire
M33 7PP
United Kingdom

t: +44 (0) 161 972 3100
f: +44 (0) 161 972 3118
e: admin@cices.org
w: www.cices.org





chartered
ICES



www.cices.org

Chartered Institution of CIVIL ENGINEERING SURVEYORS is a registered educational charity.